

Al Andalus

LIGHTING



Company Profile

LIGHTING
2019

www.alandaluselectric.com



- 01 Basic information
- 02 History
- 03 AI Andalus Activities
- 04 Organizational Chart
- 05 Expansion View
- 06 Company Products
- 07 Company Certificates
- 08 Sample of Staff Resume
- 09 Clients





Basic Information



Company Name

Al Andalus for Lighting and Electrical Services

Head Office



46 El Gomhorya st, first floor, apartment 1



Info@alandaluselectric.com



+202 23916177, +202 23916175



+2 01204312645

Show Room 1



El Gomhorya st, Opera Square, Down Town



+202 23916177, +202 23916175

Show Room 2



Opera Mall, Opera Square, Down Town



+202 23907703, +202 23902651



Establishment

- Al Andalus was established in 2000 as a limited partnership company to provide electrical supplying and service in the construction field in Egypt.
- A selected group of electrical engineers and admins were assigned to conduct orientation seminars after registration in few constructions companies in Egypt offering electrical supplying, engineering and services.
- Scope was expanded to include supplying , installing, engineering, and technical support for different electrical devices / equipment included but not limited lighting, wiring devices, panels, etc.
- Al Andalus become the sole agent for LARCEN and CERTFLUX manufacturing specified for LED lighting with high quality and competitive prices
- Al Andalus get the authorized distributed for different international brands such as Schneider, Legrand, Gewiss, bticino, etc.
- Currently Al Andalus have more than 1000 clients in different constructions, commercial and industrial field.
- Al Andalus became one of the biggest distributor for Electrical Schneider during last three years in Egypt.



1. Supplying for Electrical Equipment and Devices :

- » Supplying the LED lighting with high technology and different proposes i.e. office lighting, outdoor lighting, indoor lighting, decoration lighting.
- » The sole agent for supplying , installing and maintenance for LARCEN and CERTAFLUX manufacture LED Lighting in Egypt.



- » Design the lighting calculation system in different projects according to standard using DIA Lux program as per client requested.
- » Supplying all types of wiring devices for Legrand, bticino , Gewiss, i.e. switches, sockets, etc.

- » The authorized distributed to Supply all products of Schneider included but not limited the following :

- Switchboards and enclosures
- Contactors and protection relays
- Circuit breakers and switches
- Wiring devices
- Contactors and protection relays



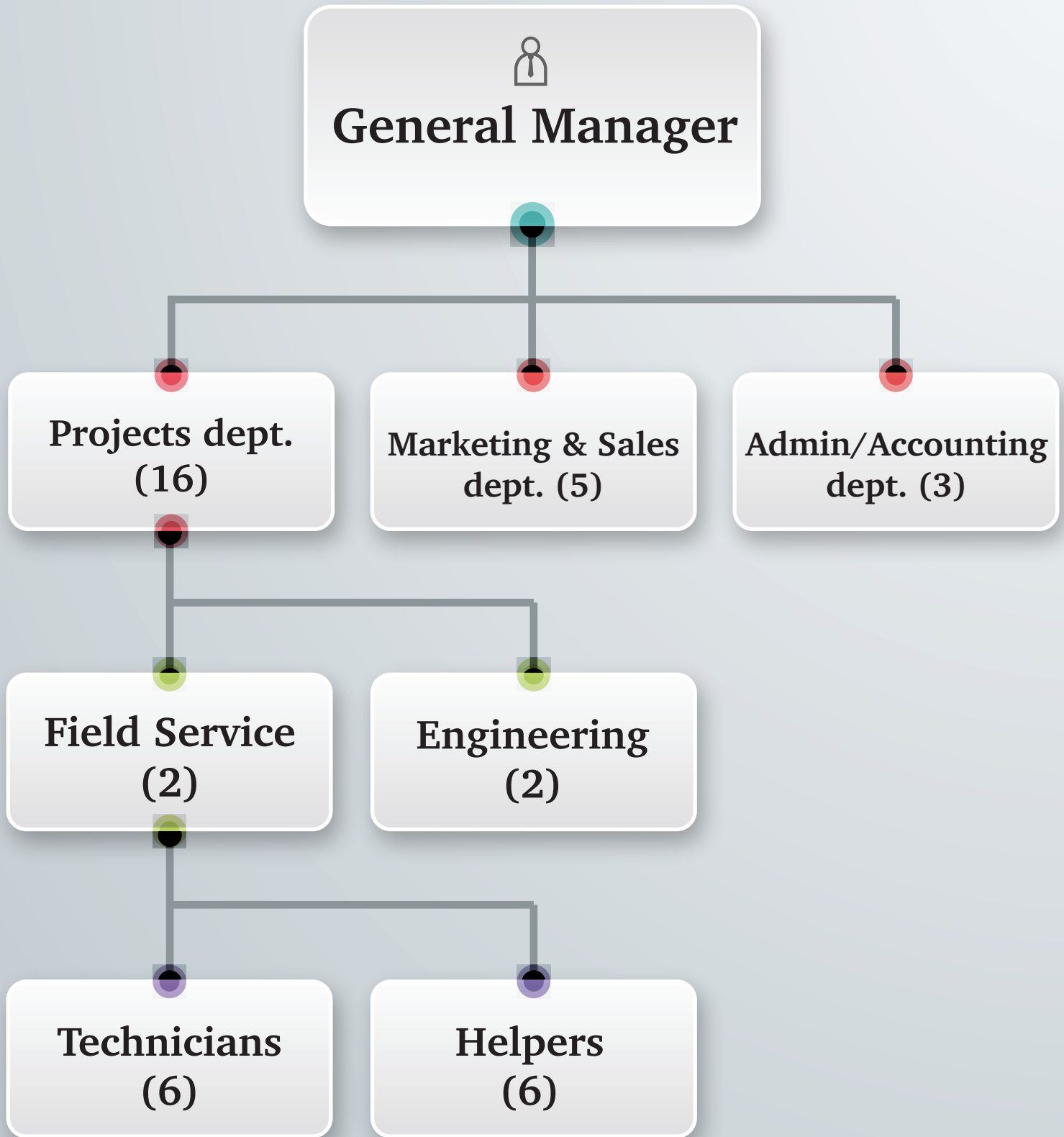
2. Installation Services:

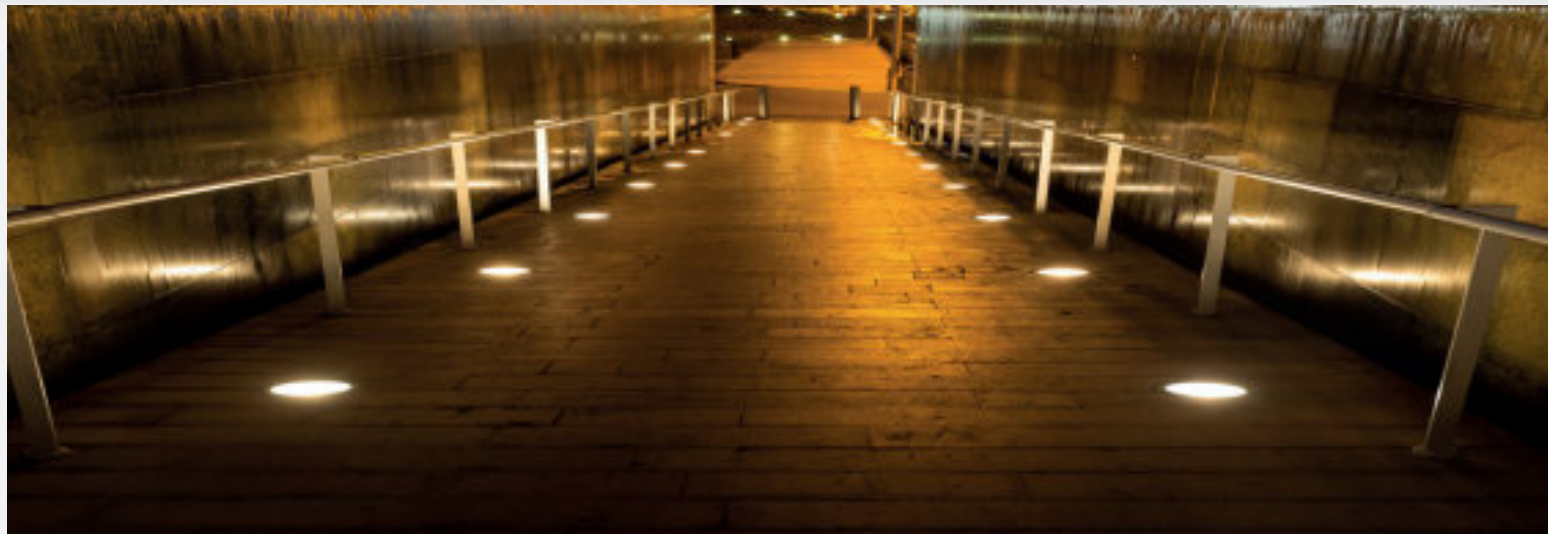
- » Lighting services (i.e. indoor, outdoor, offices, industrial, etc.)
- » Low Voltage Panel Board components
- » Street Lighting for Infrastructures and landscape
- » Apply the Lighting lumen intensity test at our factory
- » Training on all product provided at client facilities
- » Maintenance free for all equipment and devices during the guarantee period





Organizational chart





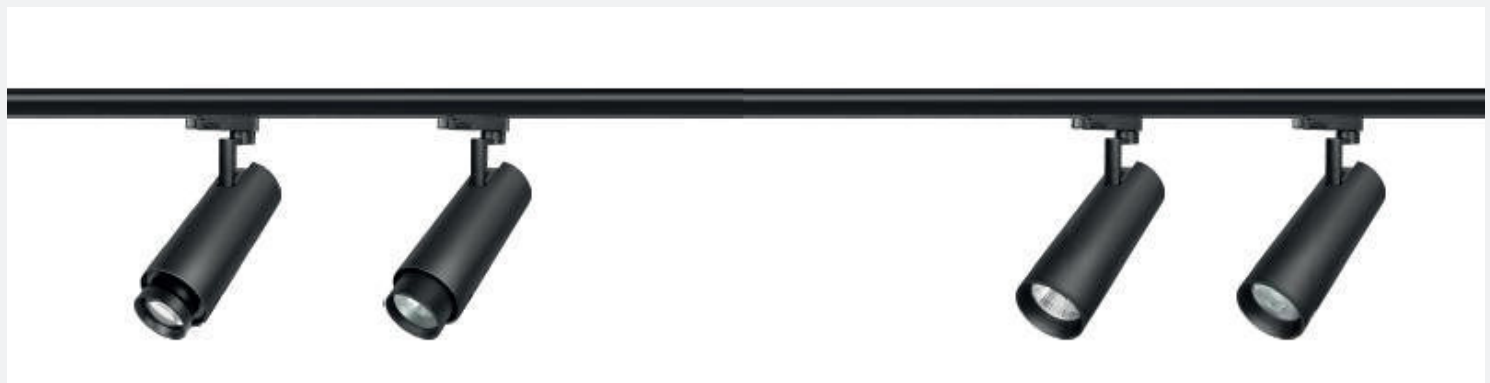
- **Al Andalus is providing Supplying, installation and maintenance service in Egypt more than 15 years building strong reputation and enhancing staff experience and capabilities.**
- **The intension is to expand Al Andalus activities to include the following:**
 - » Supply of LED lighting for Outdoor and landscape projects.
 - » Supplying and Installation for projects “turnkey project”.
 - » Involving in medium and large projects.
 - » Broken into high level projects (i.e. banks, compounds, malls, administration building, resorts, etc.)
 - » Supply and install the hotels and resorts in different location
- **The above services can be provided as supplying or EPC contractor for related projects.**
- **A lot of business opportunities are in place as a result of high market demand for such services.**



Products

LARCEN

» LED TRACK LIGHT

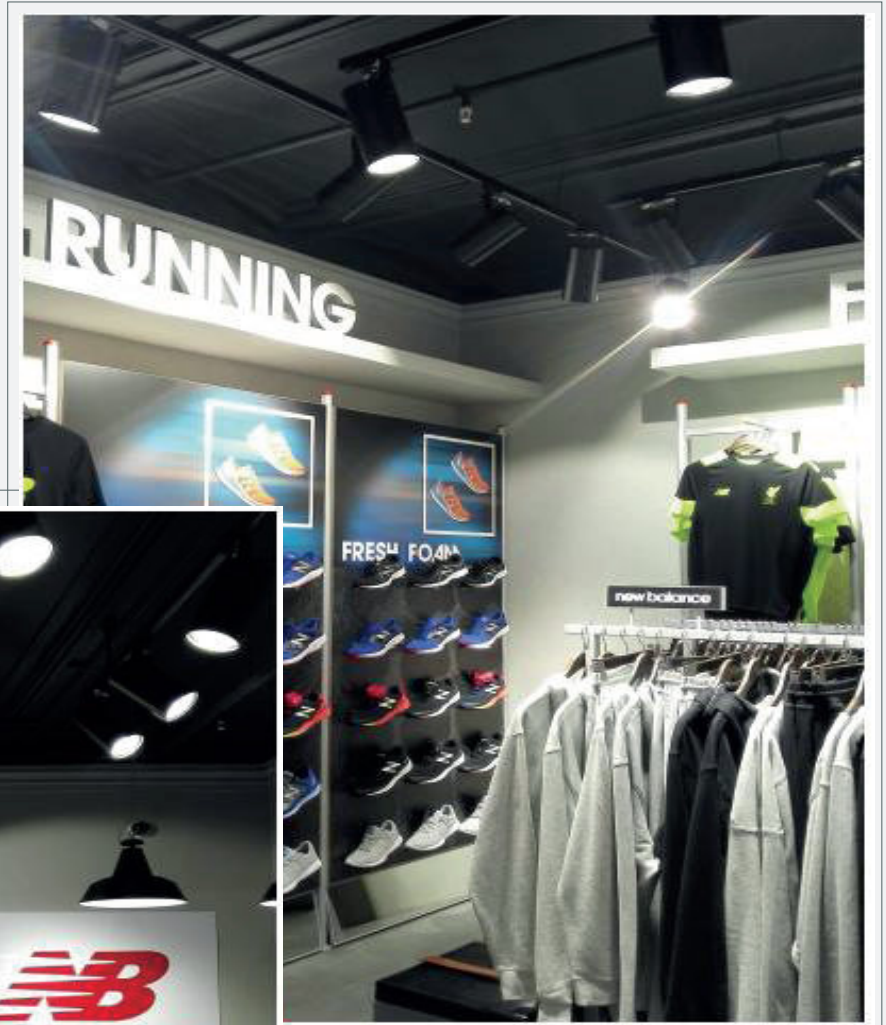




Products

LARCEN

» Applications: LED TRACK LIGHT





Products

LARCEN

» LED TRACK LIGHT

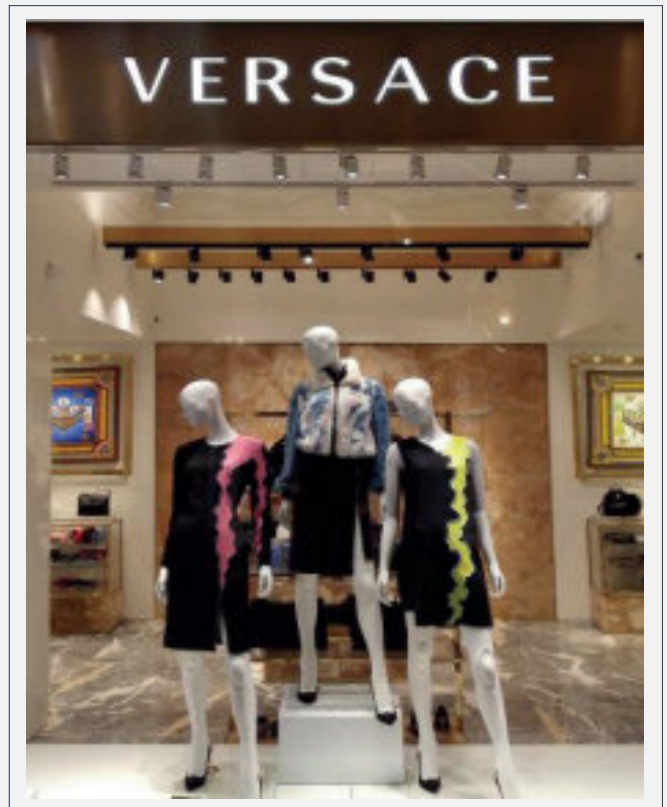




Products

LARCEN

» Applications: LED TRACK LIGHT





» LED TRACK LIGHT





Products

LARCEN

» Applications: LED TRACK LIGHT





Products

LARCEN

» LED TRACK LIGHT





Products

LARCEN

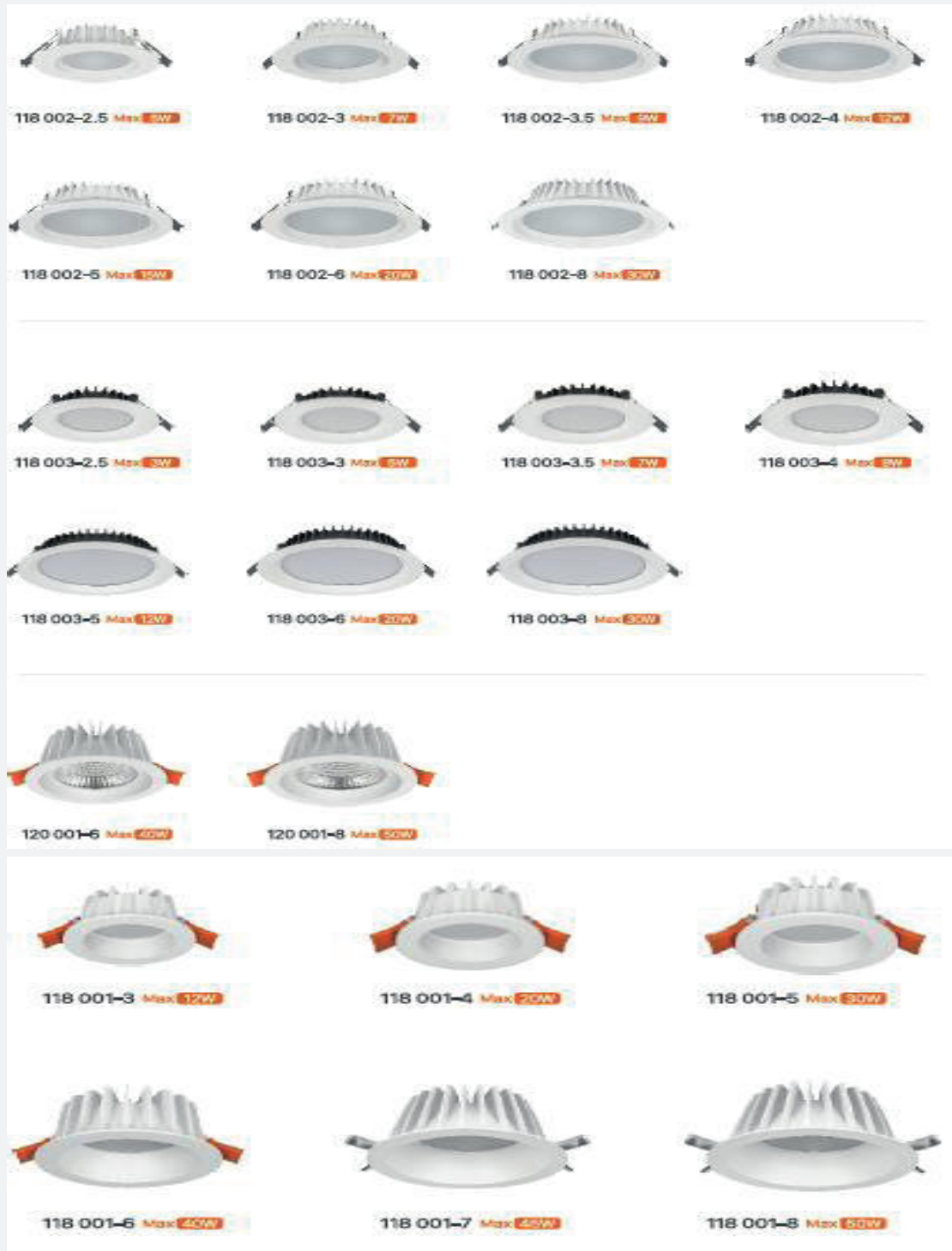
» Applications: LED TRACK LIGHT





LARCEN

» LED DOWN LIGHT





LARCEN

» Applications: LED DOWN LIGHT



**Ideal Luminaire
for the high space**



Products

LARCEN

» LED DOWN LIGHT





Products

LARCEN

» Applications: LED DOWN LIGHT





» LED DOWN LIGHT

AL Andalus Heat Management

- » Because all artificial light sources generate excess heat
- » Al Andalus resource conscious thinking determines that all luminaires are design to ensure effective dissipation of this heat
- » The result is the lamp and sensitive electronic components e.g. control gear and LED can work to their full potential through their entire life





» LED DOWN LIGHT

AL Andalus Down light



- » LED Light are compact in appearance with good technique
- » These series cover different diameter and cut off angles
- » There are versatile light distributions in high efficiency
- » Suitable for multiple lighting purpose for indoor





Products

LARCEN

» LED DOWN LIGHT



207 011-2 Max 40W



207 021-2 Max 40Wx2



207 031-2 Max 40Wx3



207 013-2 Max 40W



207 023-2 Max 40Wx2



207 033-2 Max 40Wx3



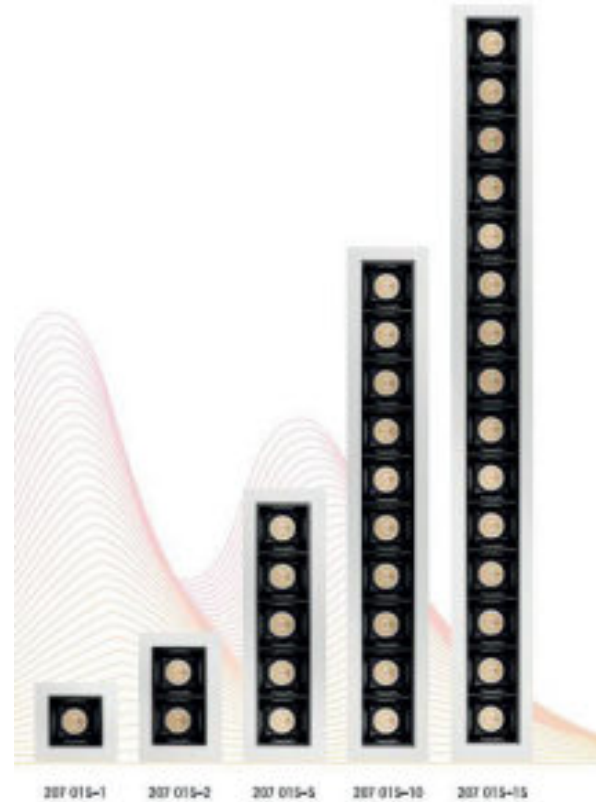
207 014 Max 15W



207 024 Max 15Wx2



207 034 Max 15Wx3

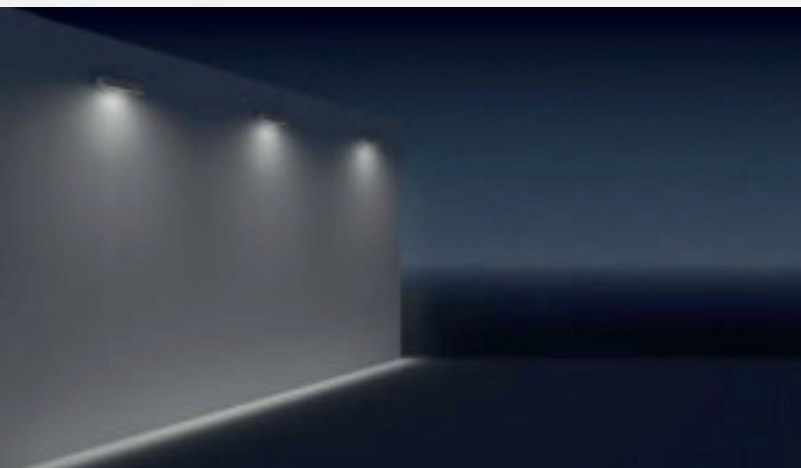




Products

LARCEN

» APPLICATIONS





LARCEN

» SURFACE DOWN LIGHT



512 151-1 Max 50W



512 151-2 Max 60W



512 161-1 Max 20W



512 161-2 Max 20W



512 171-1 Max 50W



512 171-2 Max 60W



512 181-1 Max 60W



512 181-2 Max 60W



» SURFACE DOWN LIGHT

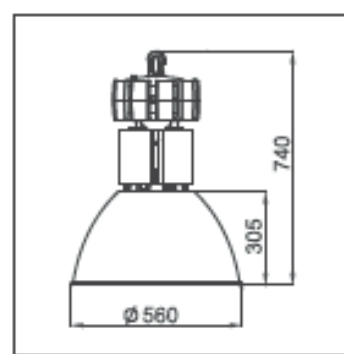
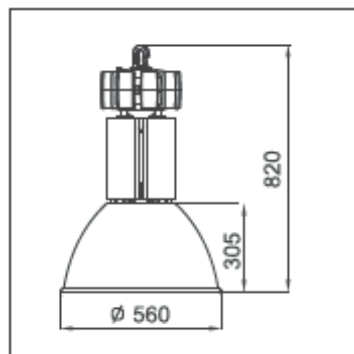
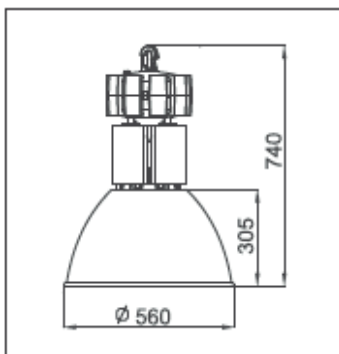




» SURFACE DOWN LIGHT

LED HIGHBAY

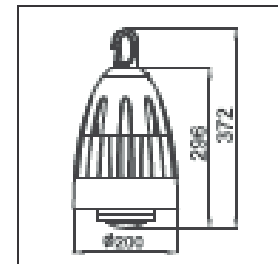
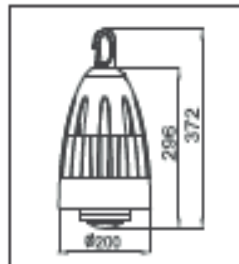
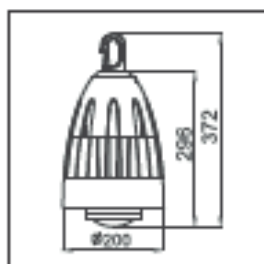
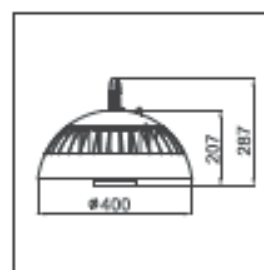
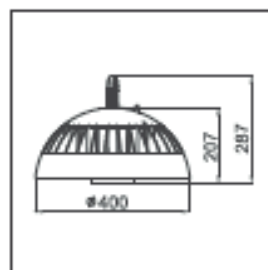
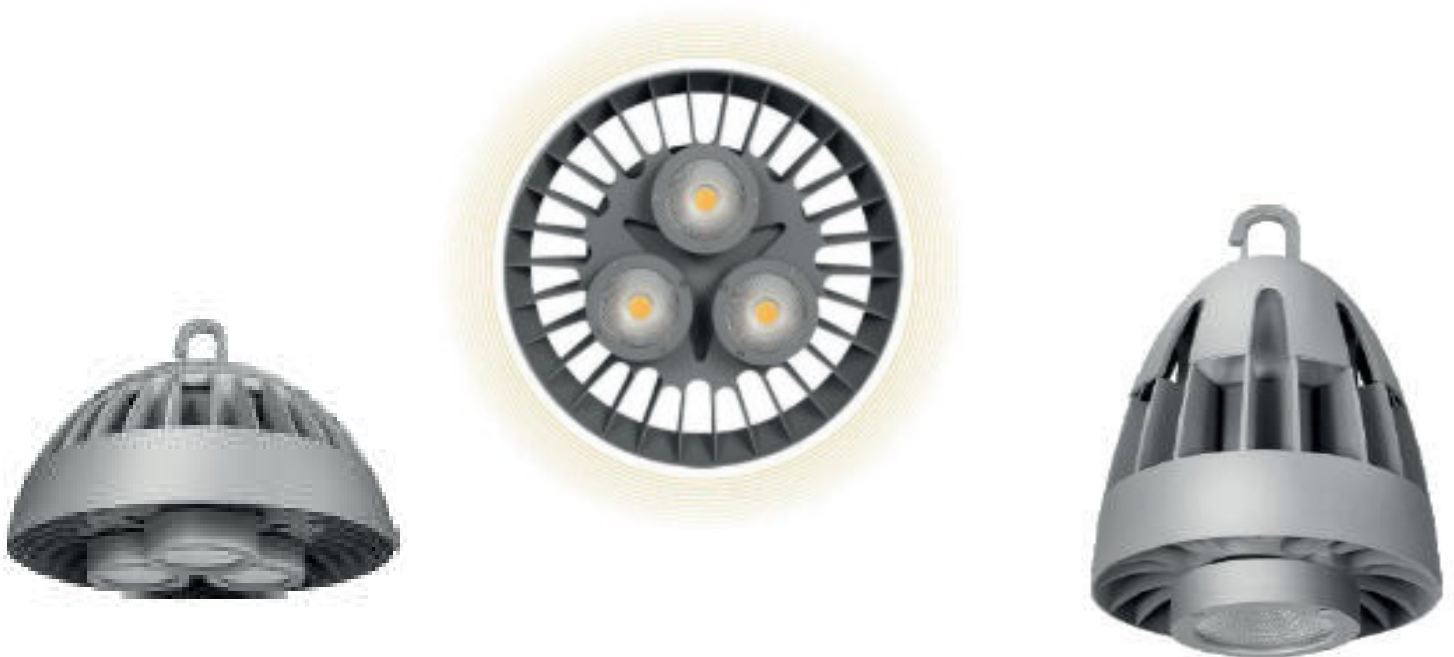
- » With die-casting aluminum and special design with high efficient heat dissipation management.
- » ALANDALUS LED HIGHBAY achieves high performance up to 100 lm/w
- » Final system lumen output efficiency with IP65
- » High protection level and applicable up to 60C ambient temperature.





LARCEN

» SURFACE DOWN LIGHT





» SURFACE DOWN LIGHT





LARCEN

» SURFACE DOWN LIGHT





» APPLICATIONS: SURFACE DOWN LIGHT



Surface-mounted down light

- » Special design of optic creates unique visual environment.
- » The LED is fixed deep of the body and designed in good control of dazzle with glare cut angle as big as 55°.
- » Light comes out even and soft without stray lights.
- » Patented design of structure makes installation much easier.
- » This series cover two sizes, in such power as 7 W, 15W, 20 W, 30W, meeting needs for lighting.
- » This series are applied to bar, dining, restaurant, hotel, conference room, club, office and exhibition room, etc.



» WALL LAMP CORNER LAMP



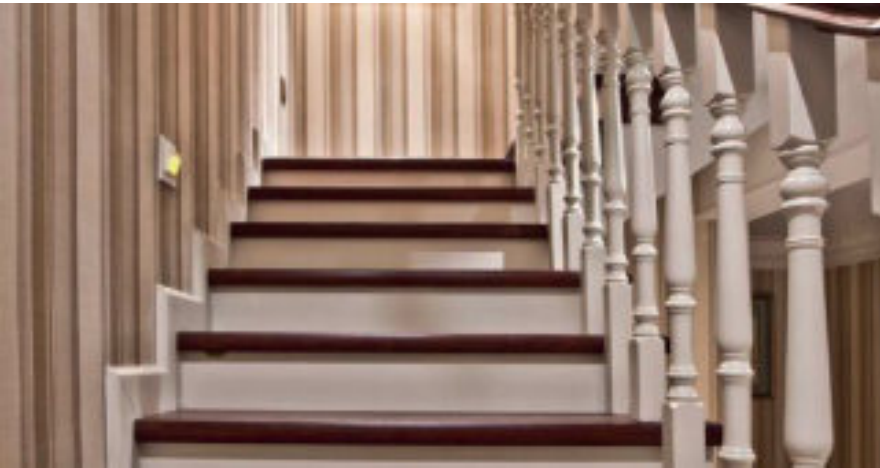
Applications

Widely used in many public place such as office , shopping mall, supermarket, bus station, waiting room, hospital, .school, etc



LARCEN

» Applications: WALL LAMP CORNER LAMP





Products

OUTDOOR LIGHTING

- » Architectural
- » Tradition
- » Solar
- » Security & Work light
- » Functional



LED BRAND

SAMSUNG

DRIVER BRAND

PHILIPS

LGB BRAND

 **MITSUBISHI**



ARCHITECTURAL (Wall, Ceiling , Bollards)

- » ARCHITECTURAL applies to all the lighting installations for homes, terraces and gardens.
- » Some products are unique, some are designed as a series.
- » The points to consider are multiple.
- » Each lamp has two lives, one during the day, the other at night.
- » The first impact is decorative, whether we like it.
- » The second is what we expect and are looking for in terms of light effect.
- » It is the combination of these two elements that gives the best adapted product to each of us.



ARCHITECTURAL

Wall						



ARCHITECTURAL

1872 MASK / P82	1869 PILO / P84	1862 EVANS / P86	1863 EVANS / P88	1879 SPLIT / P88	18915 GEMINI / P90	1891M GEMINI / P90
ST5215 TUBE / P94	ST5212 CRYSTAL / P96	ST5210 CRYSTAL / P96	ST3108 LUCA / P98	ST032023 LUCA / P98	ST5218 BILAYER / P100	ST5219 BILAYER / P100
ST6058-PIR PATH / P104	6041 FOCUS / P106	6040 FOCUS / P106	6031 FOCUS / P110	6030 FOCUS / P110	ST6041 FOCUS / P112	ST6040 FOCUS / P112
	BOLLARD					
6042 FOCUS / P108	BOLLARD	6185-1 MINI LEDSPOT / P8	6185-2 MINI LEDSPOT / P8	6146-2 LEDSPOT / P10	6142-1 CYLIN / P14	6142-2 CYLIN / P14
61645 MERIDIAN / P28	6164 MERIDIAN / P28	11876N3 CONE / P34	21876N3 CONE / P34	22525 SPRIL / P40	2252M SPRIL / P40	22575 GHOST / P46
						CEILING
18905 GEMINI / P92	1890M GEMINI / P92	ST5214 TUBE / P94	6048 FOCUS / P108	ST6051 FOCUS / P114	ST6050 FOCUS / P114	CEILING
ST6057 PATH / P102	ST6057-PIR PATH / P102	ST6058 PATH / P104	6147 ARMOR / P42	6261A TRUMPET / P16	6161 EGGO / P20	23225 ANDA / P24



» Bollard



1 MINI LED SPOT

This bollard is the perfect companion to light the pathways & terraces in your garden.

The multidirectional heads will always direct the LED light to the desired spot.



» Bollard



2 LED SPOT

Robust bollard in heavy duty die-cast aluminum, with two adjustable spot heads, brings you a sea of powerful LED light on your driveway and along your pathway



» Tradition (Wall, Ceiling , Bollards, Poles)

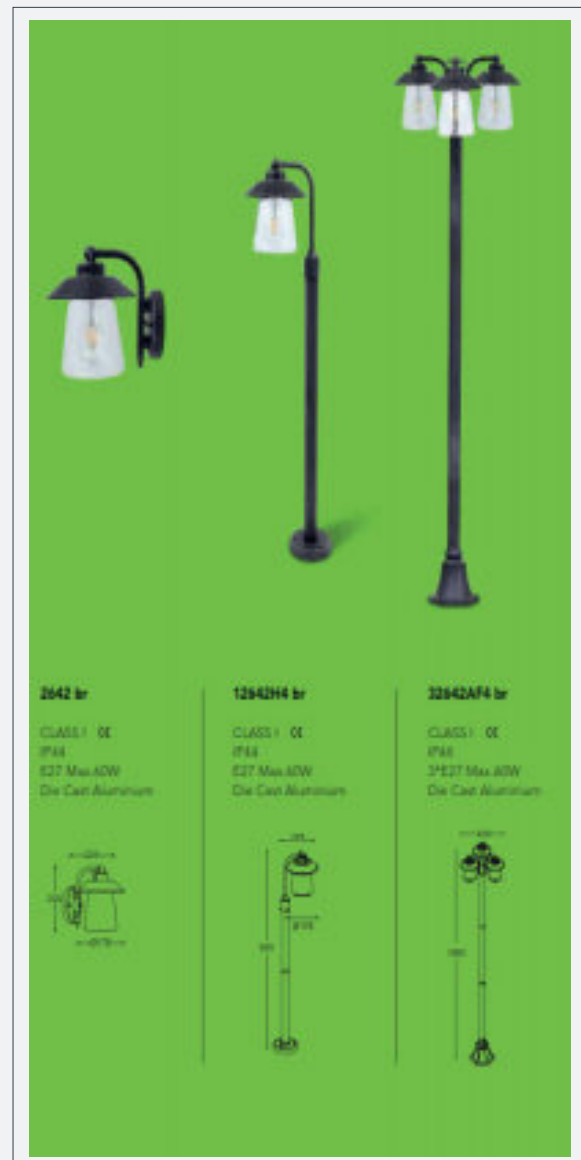


- » Revisiting the traditional lantern theme with LED integrated versions.
- » Matching with all kind of traditional homes & surroundings: Classic, Vintage, Cottage. Invisible light sources creating a magical glow.
- » The versions with an EDISON fitting are perfectly suitable for the newest "vintage"-LED bulbs resulting in a perfect match between new technology and authentic style.



» Wall & bollard: CATE Design

This complete family with an authentic feel will turn your garden into a cozy & warm atmosphere, while using the newest “filament” LED bubs.





3 Solar (Wall, Ceiling , Bollards, Poles)



- » We developed different products for different applications around solar energy, portable lights or architectural, but always with the same ease of use and implementation.
- » Today, as a result of continuous research, the high efficiency solar panels in combination with powerful LED modules are giving a really satisfactory level of light.
- » Cleverly making the most out of the available solar energy is realized by intelligent user interfaces such as 3-step dimmer, timers and PIR-sensors, resulting in more autonomy and desired light levels.



Products



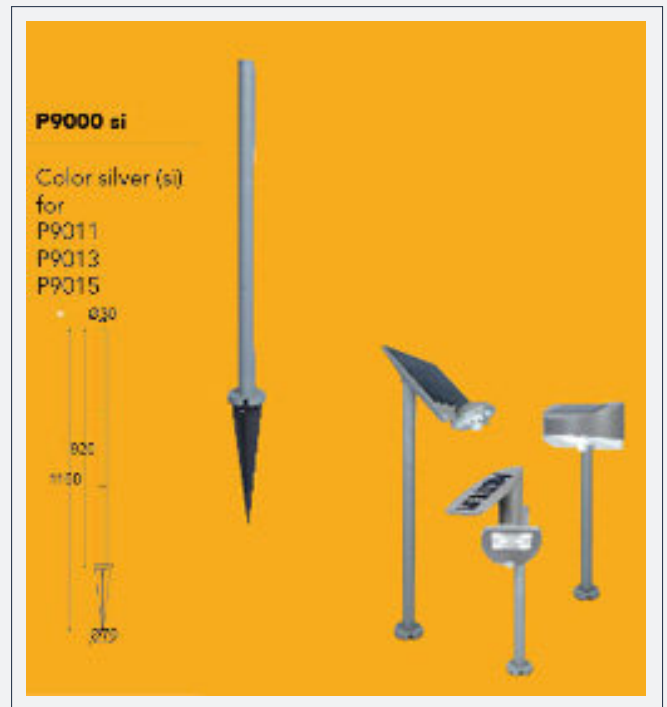
» Solar (Portable, Wall Integrated Panel, Wall independent Panel, Hybrid Collection)

SOLAR ENERGY

PORTABLE	 P130 TABLE CUBE / P130	 P138 TABLE CUBE / P138	 P140 PADLIGHT / P140	 P142 DRAGONFLY / P142	 P144 MINI BUTTERFLY / P144
 P150 MINI LEDSPOT / P150	 P152 ZETA / P152	 P154 BREAD / P154	 P156 BUBBLE / P156	 P158 BRICK / P158	 P160 SOLSTEL / P160
 P166 ZETA / P166	 P168 DROP / P168	 P170 POLE / P170	 P172 TILLY / P172	WALL INDEPENDENT PANEL	 P174 SUNSHINE / P174
 P144 MINI BUTTERFLY / P144	 P146 BUMP / P146	WALL INTEGRATED PANEL	 P148 LOOP / P148	 P150 MINI LEDSPOT / P150	 P174 SUNSHINE / P174
 P160 SOLSTEL / P160	 P160 SOLSTEL / P160	 P162 DISO / P162	 P162 DISO / P162	 P184 SHOT SOLAR / P184	 P190 KIWA / P190
HYBRID COLLECTION	 P185 SPARTA / P185	 P186 GREENBALL / P186	 P188 OTQZS / P188	 P188 FLAM / P188	 P190 KIWA / P190
 P194 STACK / P194	 P196 HONY / P196	 P198 HONY LOOP / P198	 P198 HONY DECK / P198	 P200 PILLAR / P200	 P202 GLOBE / P202



» POLE



- » The Solar wall lights BREAD, ZETA & DROP can be mounted easily and without any tools on an independent post, creating a perfect ballard solution.
- » The Post can be screwed on a solid surface or put into the ground thanks to the included spike.
- » The post contains 3 tubes giving the option to vary the height up to 1 meter.



4 Security and Work Light (Wall, Ceiling , Spike, Portable, Tripod)



- » We developed different products for different applications around solar energy, portable lights or architectural, but always with the same ease of use and implementation.
- » Today, as a result of continuous research, the high efficiency solar panels in combination with powerful LED modules are giving a really satisfactory level of light.
- » SECURITY consists of a compact range focusing on safety applications.
- » Powerful floodlights with adjustable single or multiple spot heads, enable large areas to be lit.
- » The PIR-movement sensor equipped with multiple parameter settings enables the installation of a perfect detection system.
- » WORK LIGHT full range covering all lighting needs for any work shop or construction site. From small to large, from domestic to professional.
- » We focus on easy manipulation and light efficiency and being compact when not in use.



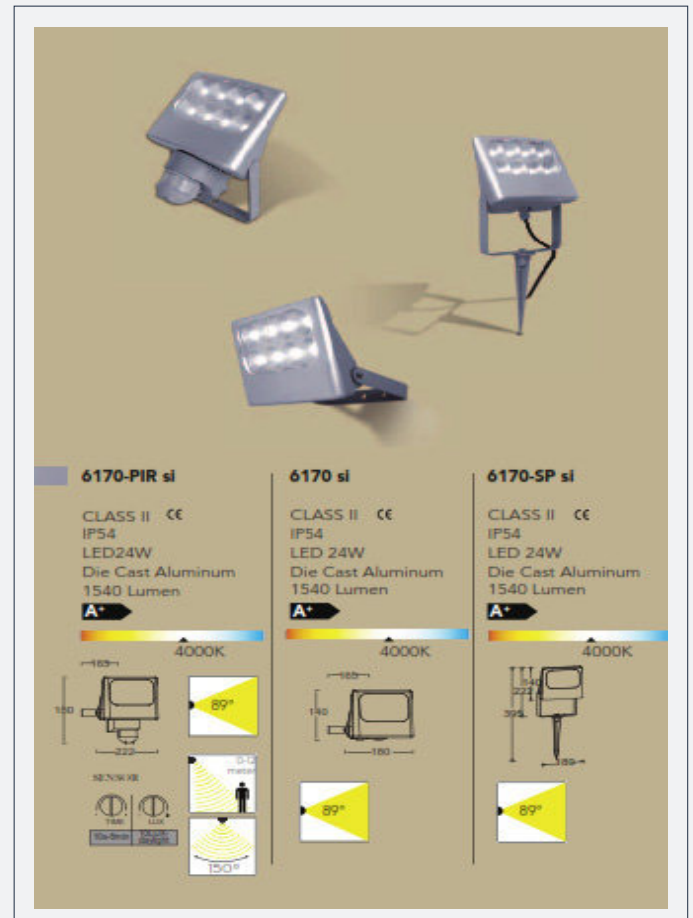
» Security & Work Light

WALL	 6156-PIR CORN / P204	 6294-PIR PERI / P206	 6322-PIR ARC / P208	 6219A SHRIMP I / P210
 6219A-PIR SHRIMP I / P210	 6231-PIR SHRIMP II / P212	 P6221A-PIR SHRIMP II / P212	 61015-PIR NEVADA / P216	 61025-PIR NEVADA / P216
FLOOD	 8091 HAMBURG / P214	 6170 NEGARA / P218	 6170-PIR NEGARA / P218	 6170-SP NEGARA / P218
 61705 NEGARA / P220	 61705-PIR NEGARA / P220	 61705-SP NEGARA / P220	 6226 ADO / P222	 6243 ZIPO / P224
WORKLIGHT	 6297 UTIN / P226	 6229 FRONT / P228	 6229-800 FRONT / P228	 6230 FRONT / P228
 6225 COLLA / P230	 6224 OWL / P232	 6223 OWL / P232	 6290 PERI / P234	 6293 PERI / P236



» SECURITY LIGHT

NEGARA : Wall & Spike

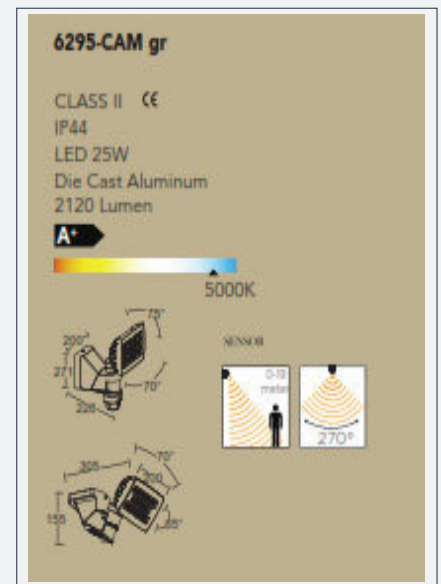


- » Very classy LED floodlight in silver grey finish.
- » The layout of the 8 powerful LEDs in the perforated aluminum reflector gives an extra design touch.
- » The PIR motion sensor and spike version make the series complete.



» CAMERA LIGHT

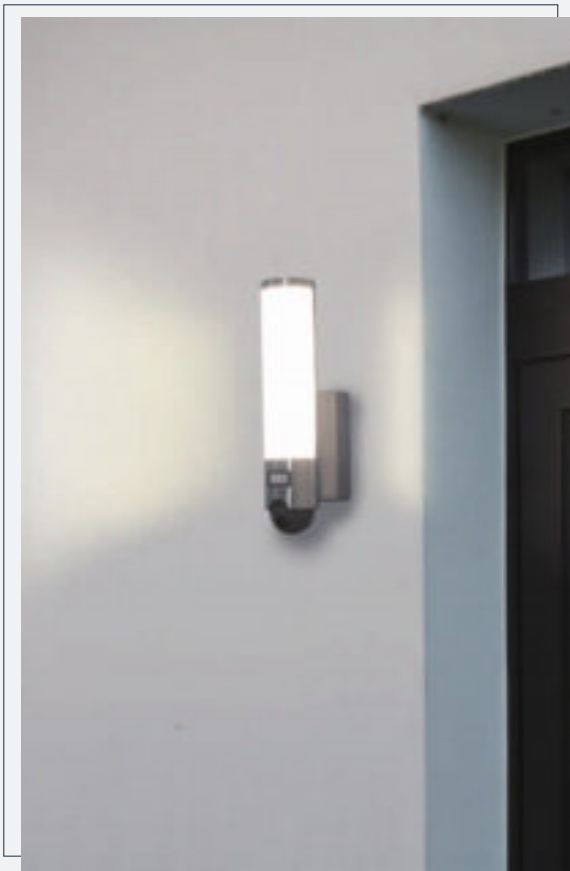
PERI: Wall & Ceiling



- » Rectangular floodlight in the SECURY'LIGHT range.
- » Powerful LED light beam with a nice grid patter.
- » The automatic plug-in connection allows a simple & easy installation.
- » Fully orientable over two axes.
- » Up-Down & Left-Right Comes in white & dark grey colour.



» CAMERA LIGHT ELARA: Wall



- » Tubular stainless steel wall light in the SECURY'LIGHT range.
- » Familiar design for entry-door application, with perfect finish and appropriate combination of the used materials.
- » Warm white LED light without shadows.
- » Camera, Speaker, Microphone & PIR motion sensor are fully integrated in the fixture.



5 Functional

(Wall, Ceiling , recessed wall, recessed Ground)



- » Under FUNCTIONAL ranges, we propose a number of essential lighting fixtures with a straight forward design.
- » Ideal complements for functional applications like corridors, staircases, hall ways, entrance paths and facades.
- » Most of the ranges come with an impact-proof polycarbonate opal diffuser resulting in a homogenous and strong light output without shadows.
- » The recessed ranges for wall & ground are covering all standard applications.
- » This with multiple light source possibilities and small , medium and large size.



Products



» Functional (Wall, Ceiling , recessed wall, recessed Ground)

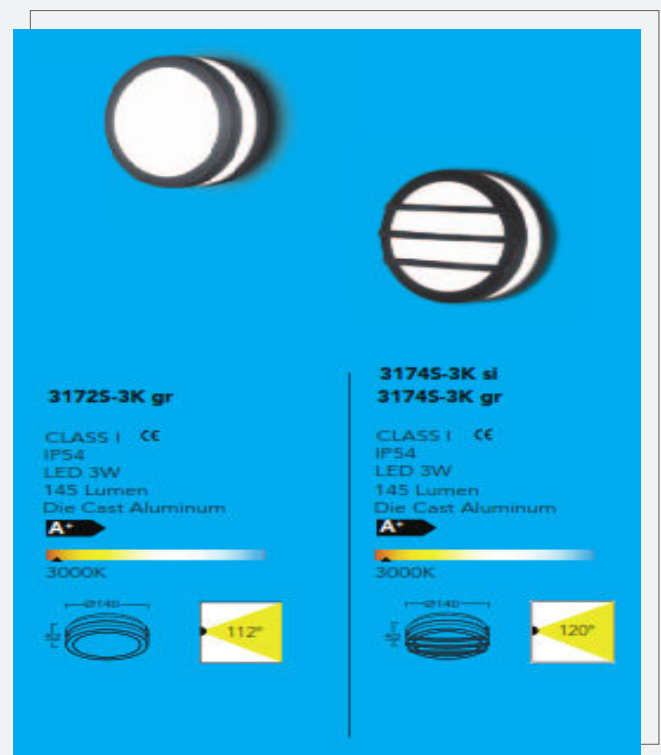
FUNCTIONAL				
WALL & CEILING				
	3481L UBLO / P248	3481S UBLO / P250	3491L UBLO / P248	3491S UBLO / P250
3372 TITAN / P254	3361 TITAN / P256	3362 TITAN / P256	3363 TITAN / P256	3172S TITAN / P258
3342S SEINE / P262	3304 BONN / P264	ST3304 BONN / P264		
RECESSED WALL				
	1831A VICTORIA / P266	1831B VICTORIA / P266	1831C VICTORIA / P266	1831D VICTORIA / P266
RECESSED GROUND				
	7005A BERLIN / P272	7005B BERLIN / P272	7042A CYDOPS / P274	7037A MERC / P276



» TITAN: Wall & Ceiling



- » Super compact wall & ceiling light, ideal to use for multiple light compositions on stairways, outside walls and terraces.
- » The integrated LED light engine radiates a gentle warm white light without any shadows.
- » The subtle glow to the back makes it complete.



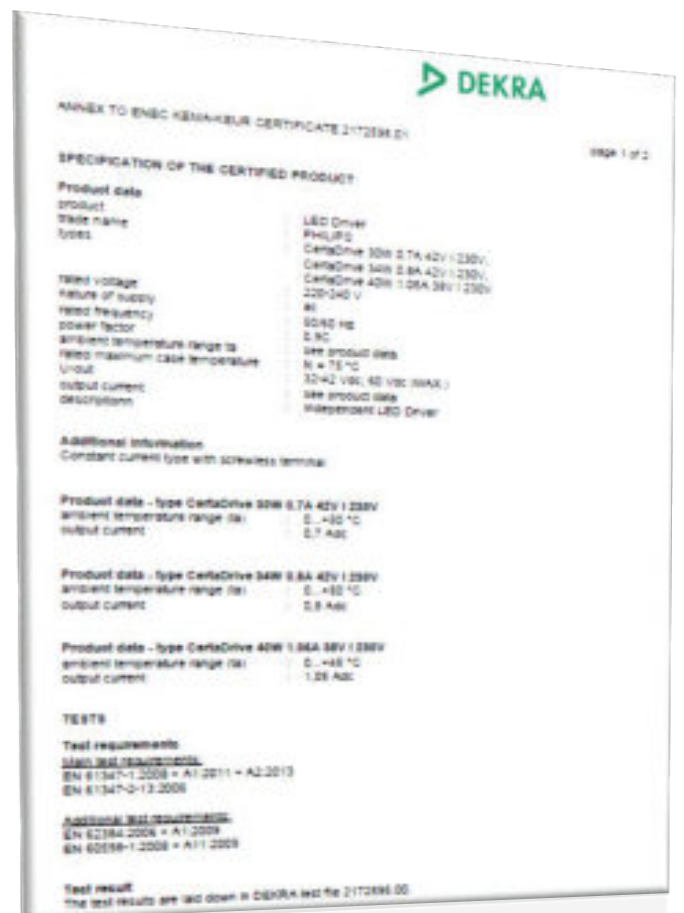


» Company Standards & Quality Certifications

- 1- ISO 9001:2008 for Quality Management System.
 - 2- OHSAS 18001:2007 for Occupational Health and Safety Management System.
 - 3- ISO 14001:2015 for Environmental Management System.
 - 4- Luminaire Photometric Test Report
 - 5- Philips LED Drive
 - 6- Authorization to Mark by Intertek
- ▶ The above quality certificates have been accredited by International Accreditation Services of USA (Accreditation No. MSCB-132)
 - ▶ Al Andalus has its own HSE, Quality and Environmental policies.



» Company Standers & Quality Certifications





» Eng. Ahmed Fawzy , MSc., PMP “ Project Manager”

Email : a.fawzy.af@gmail.com

Mobile :+201148886467

Address : Cairo, Egypt

Ahmed Fawzy Hamed, M.Sc., PMP

EDUCATION

PhD in Electrical Engineering ,Ain Shams University, 3013-2018

Diploma in Engineering and Natural Gas Technolgy, Azhar university, 2012-2014

MSc in Electrical Engineering ,Ain Shams University, 2008-2012

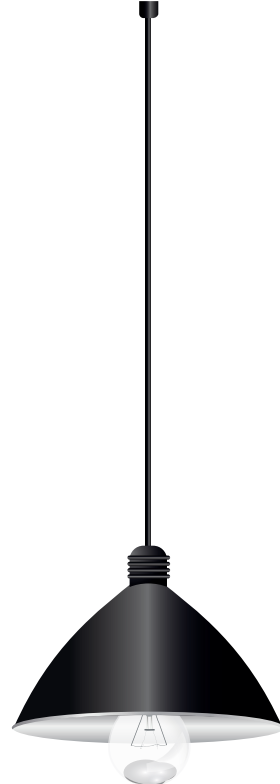
BSc of Engineering - Electrical Power and Machine Dept.,Ain shams University, 2001-2006

CERTIFICATIONS:

- Professional of Management Project “PMP”, PMI, USA
- High Voltage Authorization according to Shell Safety Rules from PDO “ Petroleum Development of Oman”- OMAN
- Design, Maintenance and Operation Medium Voltage Switchgears, Schniedr
- Train The Trainer, DUBAI
- Business Coaching Skills – AUC
- LEEA Certifications in lifting Equipment, UK
- Computerized Maintenance Management System (CMMS) – AUC.
- Autocad
- SAP (GWOS, FSR, E-WIMS, BW)
- Published Technical Research in Egyptian Journal of Petroleum , Elsevier, USA

✓ Clients





Al Andalus

LIGHTING

www.alandaluselectric.com

